

Plans For Area College Unveiled

March 18 1967

By MYRTLE BARNES
Times-Herald Staff Writer

Architects today unveiled building plans for the Peninsula's Community College—a \$876,000 project which includes three separate buildings connected with covered walkways covering 58,000 square

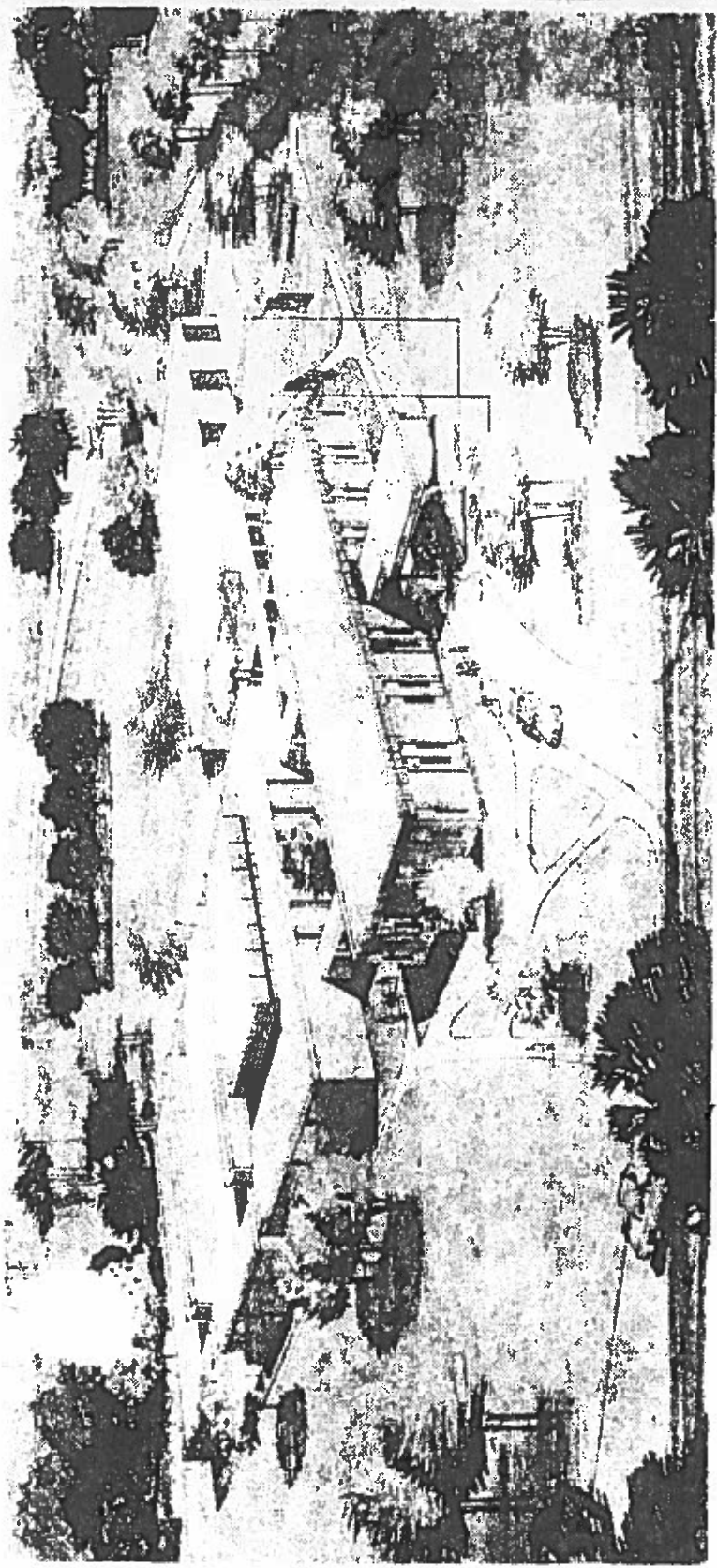
feet. The plans are a prototype for the 22 colleges to be built across the state and were drawn originally by Marcel Wright of Richmond. For-Coile Associates are the architects who are handling modifications of site and building to meet Peninsula needs.

The two-year college is scheduled to be built on a site on Route 64 and Big Bethel Road, donated by the City of Hampton.

Hopefully, contracts will be let for construction in late May or early June to meet the scheduled opening date of September 1968.

The actual buildings and site work are budgeted at \$465,000. Additional for equipment including that needed to completely outfit a 12,900 square foot mechanical unit. Included here would be a machine shop, welding and heating lab, materials testing lab, instrumentation lab, three classrooms and faculty offices.

The front of the college shows a 6,000 square foot administrative unit containing offices for the president, receptionist-secretary and book-binding, registrar, dean, dean of students, guidance facilities



Peninsula's Community College will have three separate buildings connected by covered walkways. In front is administrative unit, with large commons-instruction unit behind it. To right is the mechanical instruction unit. College will occupy Hampton site on Route 64 near Big Bethel Rd.

containing the library, student lounge, book store and lecture rooms as well as 13 faculty offices. Located here are two drafting labs, two electronics labs, labs for chemistry, biology, physics, a specialized learning lab for specialists studying, and classrooms outfitted for typing, office machines, accounting, computer classes, unit records and three for general studies.

toward a degree elsewhere in their third and fourth years. Community colleges will never offer more than two years work, explains Dr. Dana Hamel, director of the state program.

One of the major duties of the local advisory board which is being organized is to help determine what special courses the Peninsula college should offer.

pick a chairman and consider a name for the local campus. Members are L. Felix Bledsoe Jr., Newport News; Ralph D. Cobb, James City County; Thomas M. Law and Dr. Jess P. Miller, Hampton, serving four-year terms; Edward P. Alexander, Williamsburg; Dr. Francis W. Shield, Hampton and Robert B. Smith, Newport News, three-year terms; Melvin T. Rutler, Hampton.

Helping select a president for the Peninsula college is another major board task. Hamel is acting president until the permanent one is chosen.

Hamel told the board the college "primarily will train technicians who need education beyond the high school but do not require a college degree. It will offer adult education. There will be con-