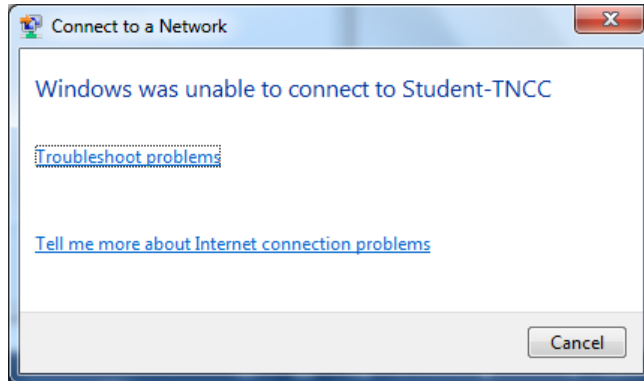


TNCC secure Wireless Network Connection Procedures For **Windows 7** (and Vista)

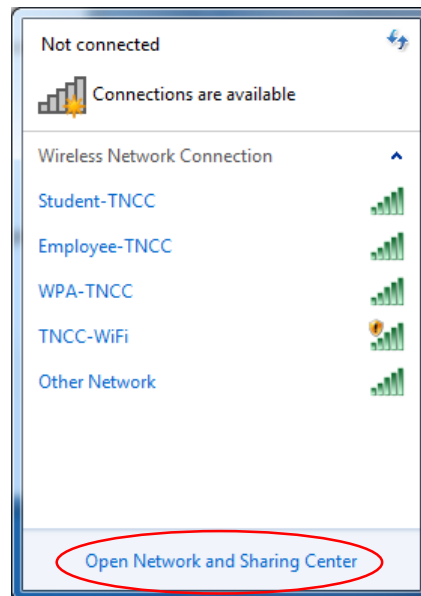
How to configure Windows Vista and Windows 7 with IEEE 802.1x Authentication

If your connection to Employee-TNCC or Student-TNCC fails and you receive a message like the one below, follow these instructions to successfully connect to the TNCC encrypted wireless network.

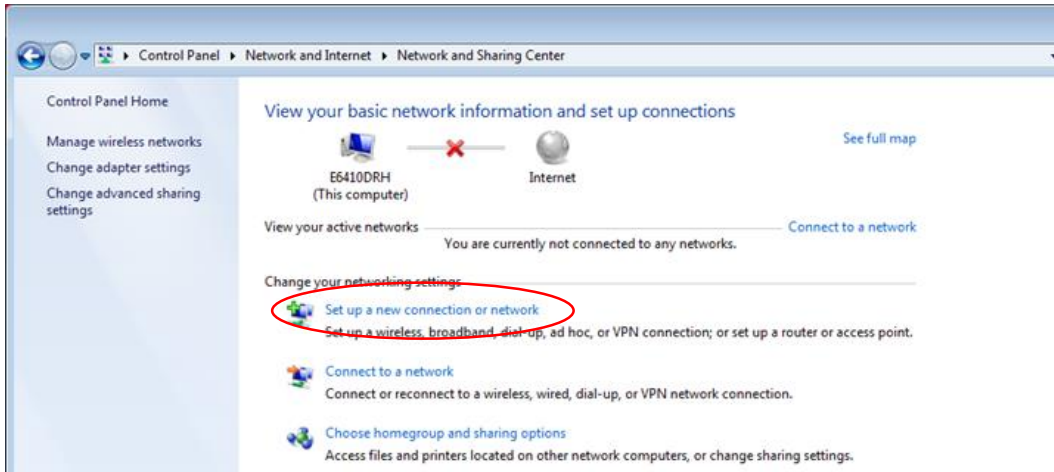


NOTE: Manufacturers' adapters are often bundled with management software. If you have problems connecting to TNCC's 802.1x wireless network try disabling this software and use Microsoft's built-in configuration tool instead. If you are still having problems after following these instructions, you will need to update your wireless network card drivers.

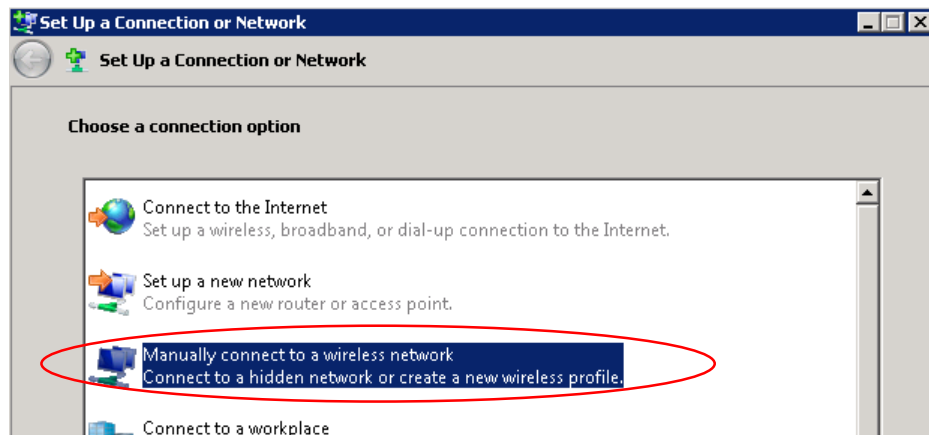
1. Right-click on the wireless network icon in the taskbar (bottom right on the desktop). Select "***Open Network and Sharing Center***". (Alternatively, you can go to Control Panel then ***View network status and tasks*** under ***Network and Internet***.)



2. In the window that appears, select “*Set up a new connection or network*”.



3. Select “*Manually connect to a wireless network*” and then Next.



4. Enter information for the wireless network you want to add:

a. Network name:

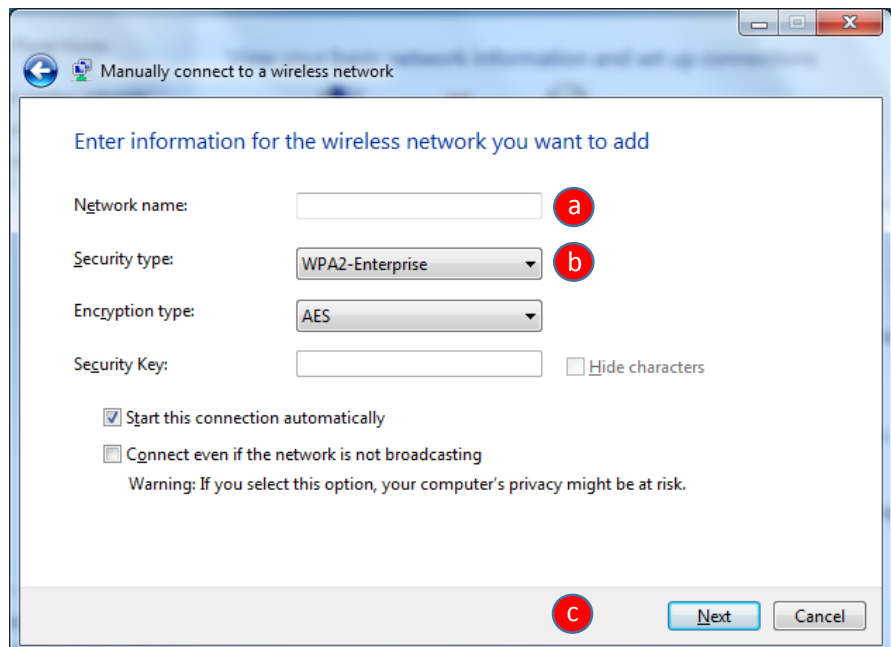
Employee-TNCC for employees

Student-TNCC for students

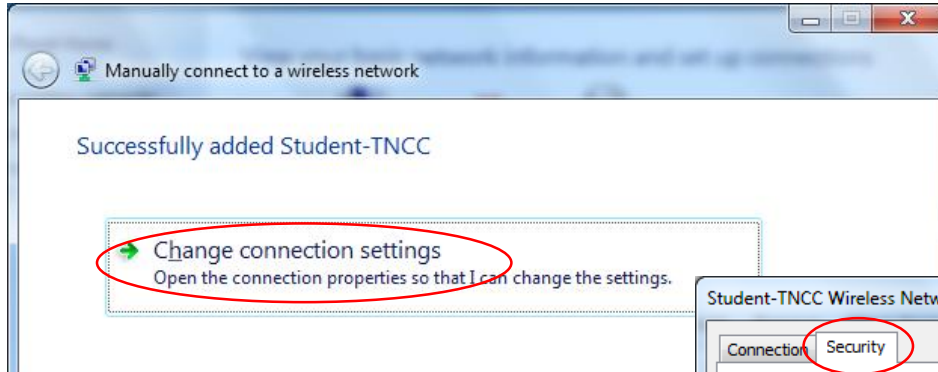
(Must be type exactly as shown, including case-sensitivity)

b. Security Type: **WPA2-Enterprise**

c. Click *Next*.

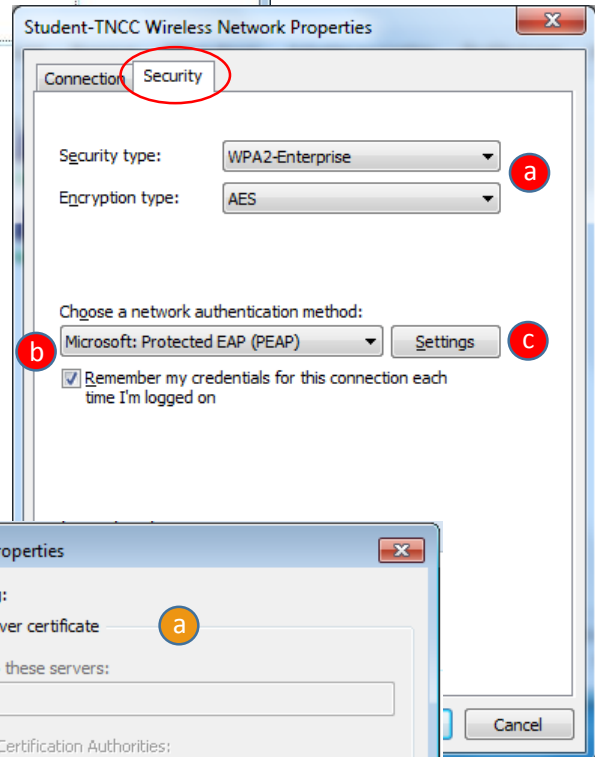


5. Click **“Change connection settings”**.



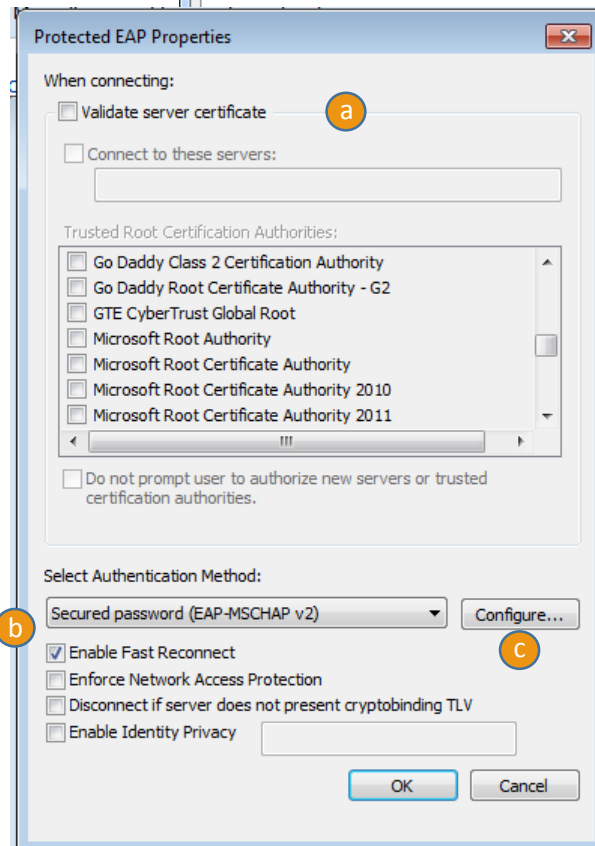
6. Select the **Security** tab

- a. Verify Security type is **“WPA2-Enterprise”** and Encryption type is **“AES.”**
- b. Authentication method should be **“Microsoft: Protected EAP (PEAP)”** and **“Remember my credentials for this connection...”** checked.
- c. Click the **Settings** button.



7. Protected EAP Properties

- a. Uncheck the box marked **“Validate server certificate”**.
- b. Leave **“Secured Password (EAP-MSCHAP v2)”** selected and **“Enable Fast Reconnect.”** checked.
- c. Click **Configure**.

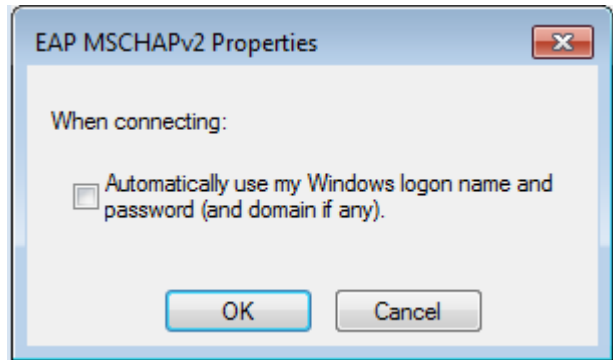


8. EAP MSCHAPv2 Properties

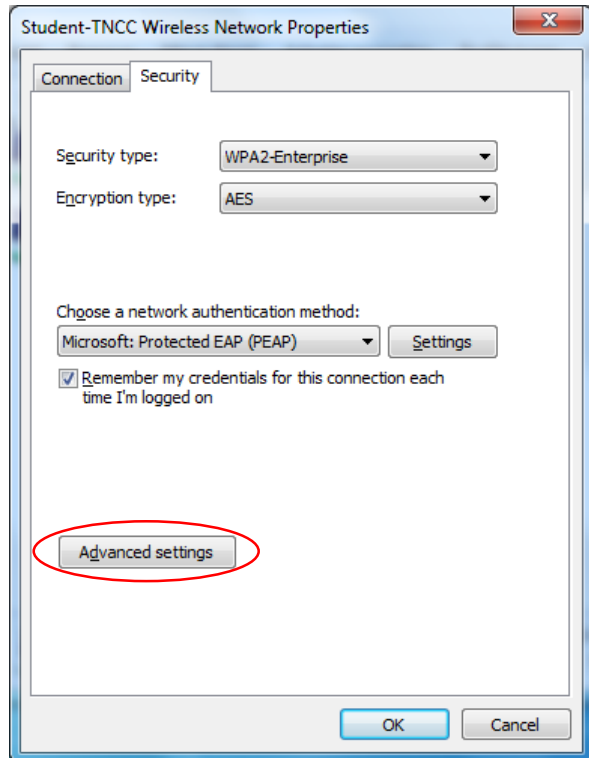
For personal devices, **uncheck** “*Automatically use my Windows logon name and password*”.

TNCC domain computers connecting to Employee-TNCC can have this **checked**.

Select **OK** to close the *EAP MSChapv2* window and **OK** again for the *Protected EAP Properties*.

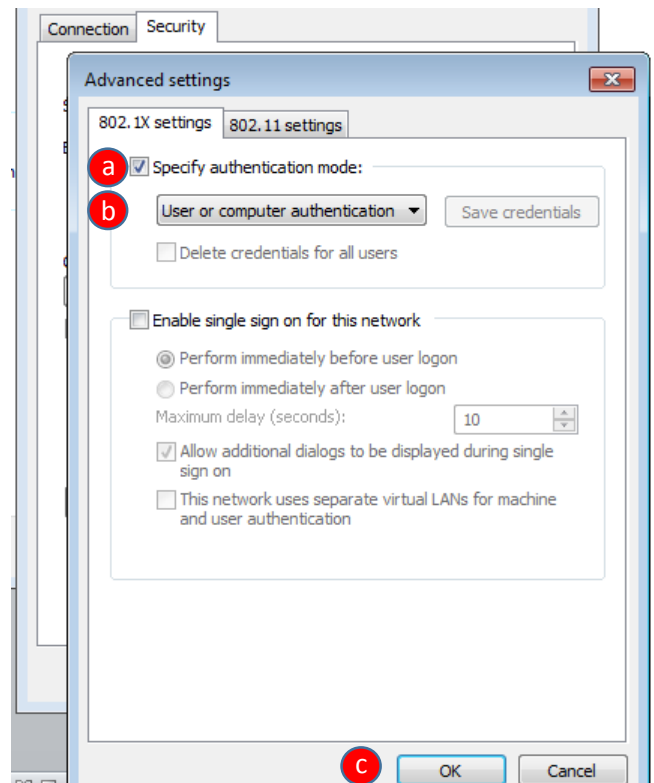


9. Select *Advanced Settings*.

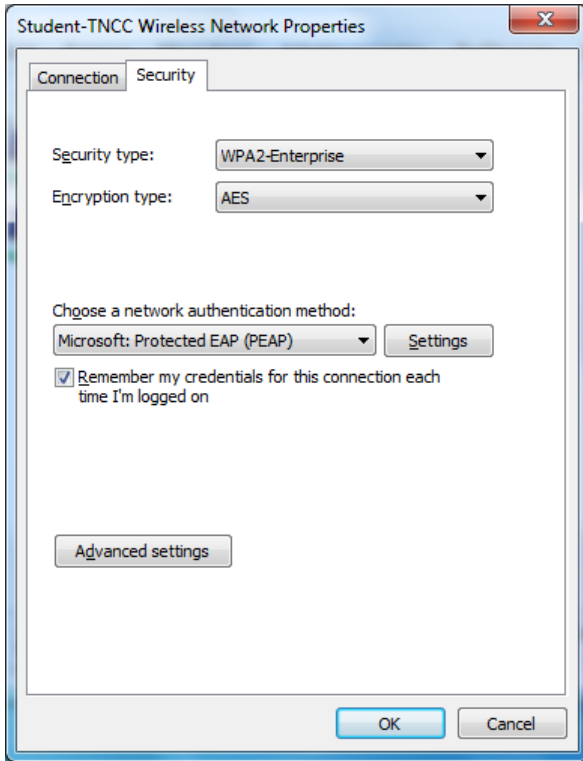


10. Advanced Settings

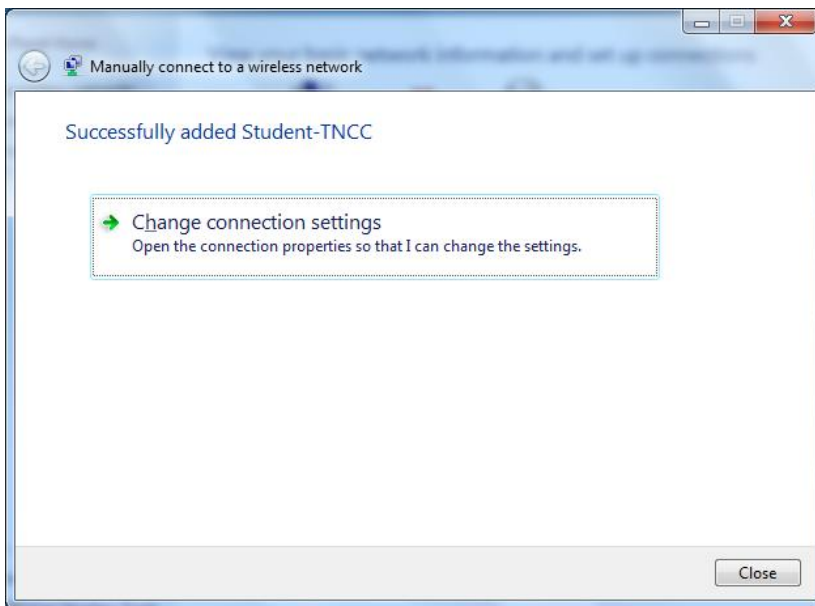
- a. Check the “*Specify Authentication Mode*” box.
- b. Select “*User or computer authentication*”.
- c. Click **OK**.



11. On the Wireless Network Properties window, select **OK**.



12. Select **Close** on the "Successfully added Student-TNCC" network dialog.

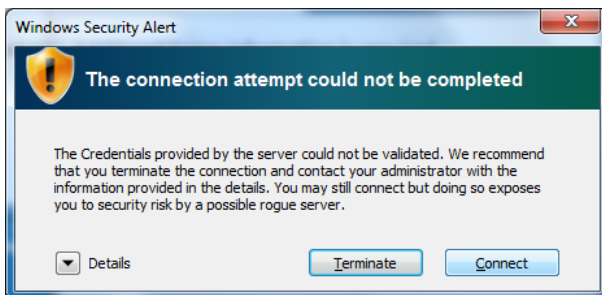


TO LOG IN:

1. Click on the Wireless icon in the taskbar (bottom right on the Desktop).
2. Choose '**Student-TNCC**' and click **Connect**.



3. If you receive the following Security Alert select **Connect**.



4. If prompted enter your username and associated password.
 - a. Employees: use your Network login & Password
 - b. Students: use your MyTNCC login & Password
 - c. Click **OK** to connect

